

App Note #183 AT&T 3G Sunset - MultiTech



1076 State Route 34 | Hurricane, WV 25526
1.877.757.6565 | www.eagleresearchcorp.com

APPLICATION NOTE #183

AT&T 3G Sunset 4G Device Impact - Multitech

DATE: 11-January-22

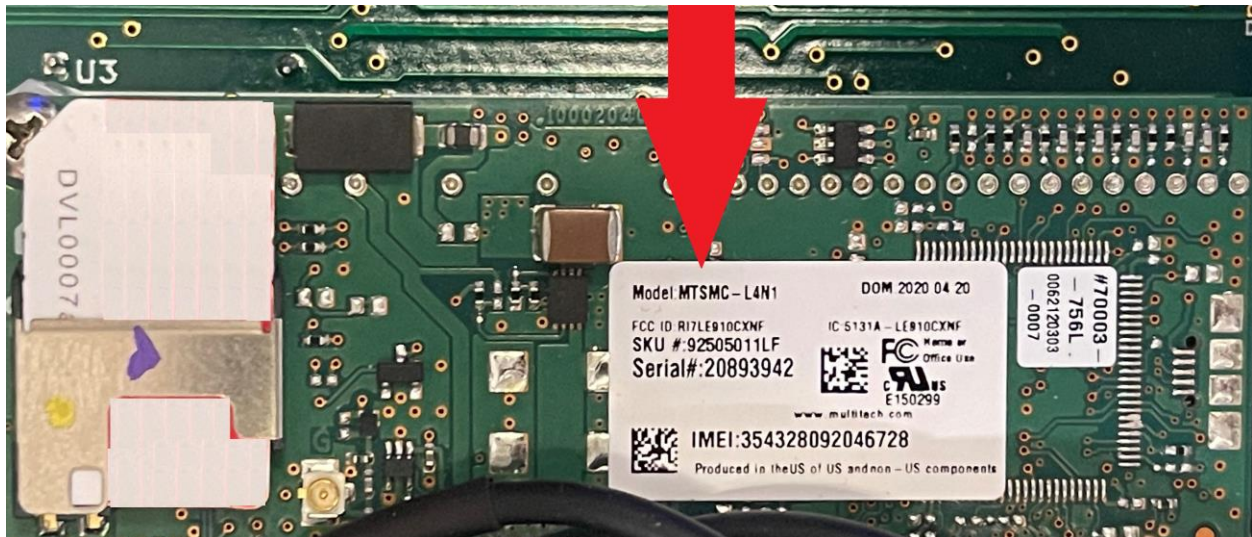
Overview

MultiTech has issued a product change notification for the sunset of AT&T's 3G network, this change affects the LAT3 and L4N1 devices. A firmware upgrade of the Eagle processor board is required to avoid service interruptions. MultiTech's default signaling is voice centric and the firmware update will send the appropriate commands to the cellular module to make it data centric. This upgrade **MUST** be completed before February 22, 2022 otherwise the device will stop connecting to the AT&T network.

[MultiTech PCN 03092021-02](#)

The model number can be located on the front of the cellular module. Only the two models listed below when using an AT&T SIM card require this update.

- MTSMC-LAT3
- MTSMC-L4N1



Firmware Requirement

XARTU/1: Firmware [XARTU-1 v4.05/20](#) or higher is required. Save the XARTU-1 v4.05/20.bin file to the C:\Field Manager folder.

E Series: Firmware [E3 v1-01-50](#) or higher is required. Save the E3 v1-01-50.bin file to the C:\Field Manager folder.

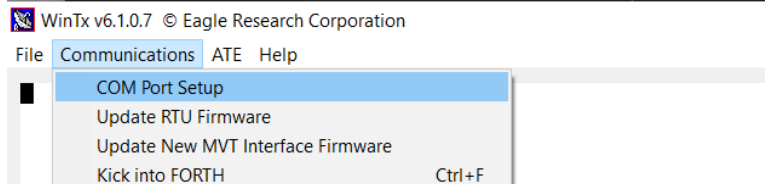
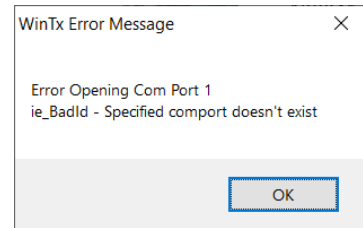
MPplus II: Firmware [MPPLUS2 v1-02-22](#) or higher is required. Save the MPPLUS2 v1-02-23.bin file to the C:\Field Manager folder. WinTx v6.1.0.0 or higher is required to upgrade the firmware in an MPplus II. [WinTx 6.1.0.20](#) Extract and replace to the C:\Field Manager folder.

Firmware Upgrade

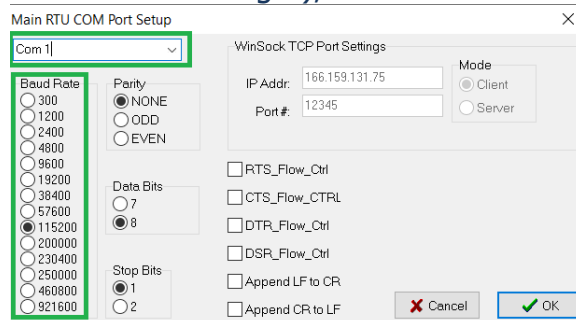
(Navigate to the appropriate product below)

XARTU/1

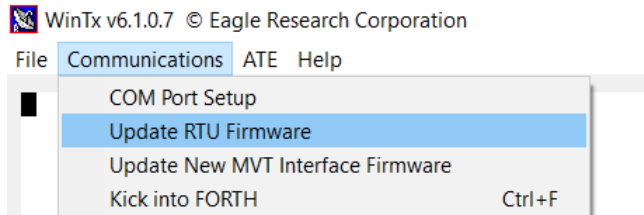
- 1) Connect Communications Cable
- 2) Launch Field Manager
- 3) Click on Tools
- 4) Click on Launch WinTx
 - a. If WinTx has never been used or if Port 1 is not the default click OK and the program will then launch
- 5) Click Communications
 - a. Select COM Port Setup



- 6) Set the Com Port and the Baud Rate to the proper selections (same used to connect with Field Manager), then click OK

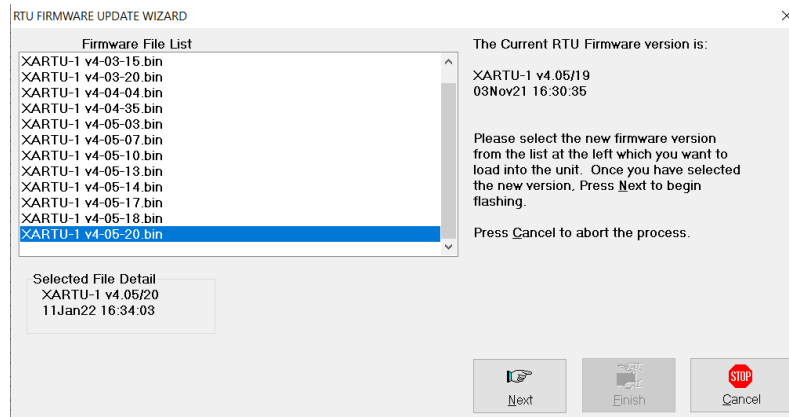


- 7) Click Communications
 - a. Select Update RTU Firmware



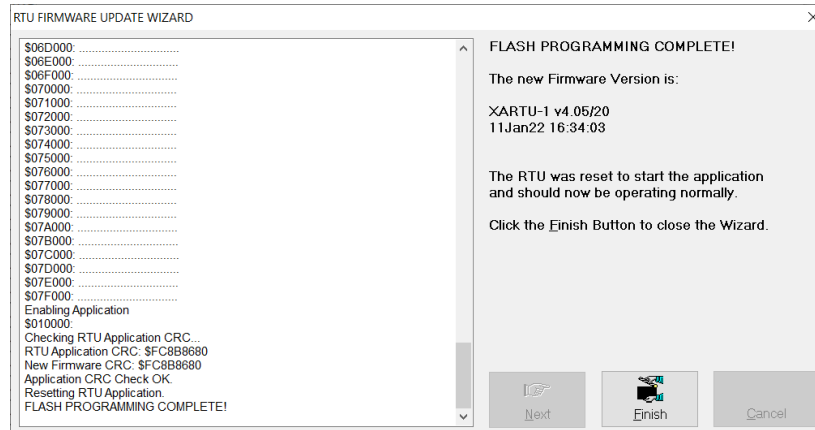
- 8) When the Wizard launches click Next

- 9) A Firmware File List will be displayed
 - a. Verify XARTU-1 v4.05/20.bin is highlighted in blue
 - b. Click Next



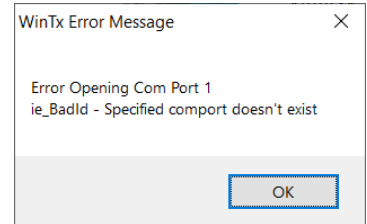
- 10) Once the update has completed the Finish button will be available.

- a. Click Finish

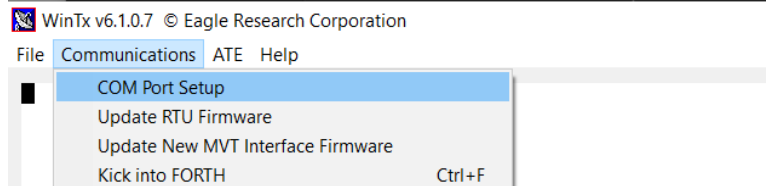


E Series

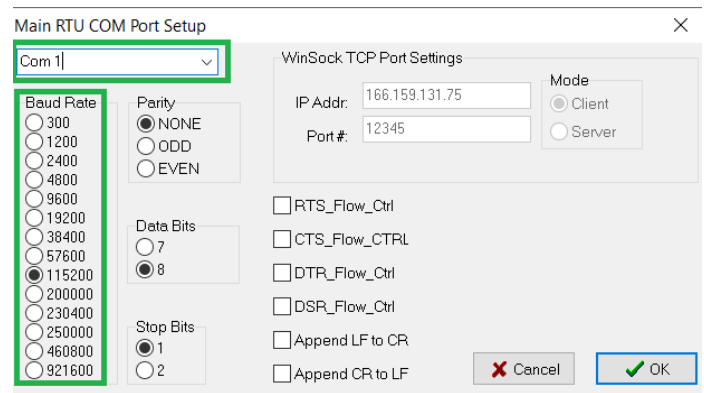
- 1) Connect Communications Cable
- 2) Launch Field Manager
- 3) Click on Tools
- 4) Click on Launch WinTx
 - a. If WinTx has never been used or if Port 1 is not the default click OK and the program will then launch



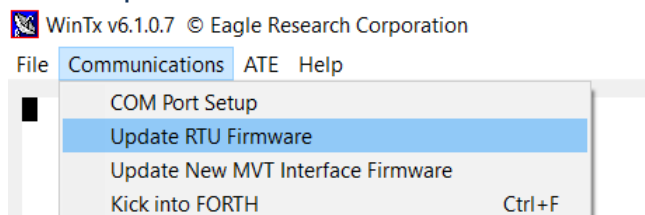
- 5) Click Communications
 - a. Select COM Port Setup



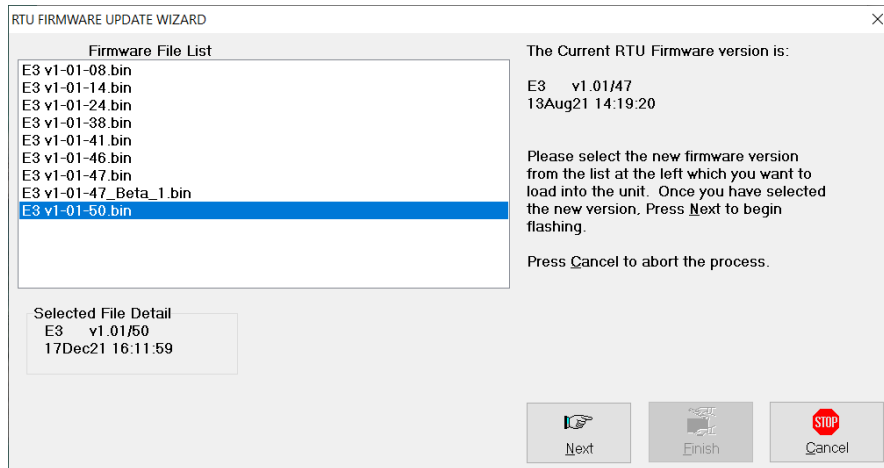
- 6) Set the Com Port and the Baud Rate to the proper selections (same used to connect with Field Manager), then click OK



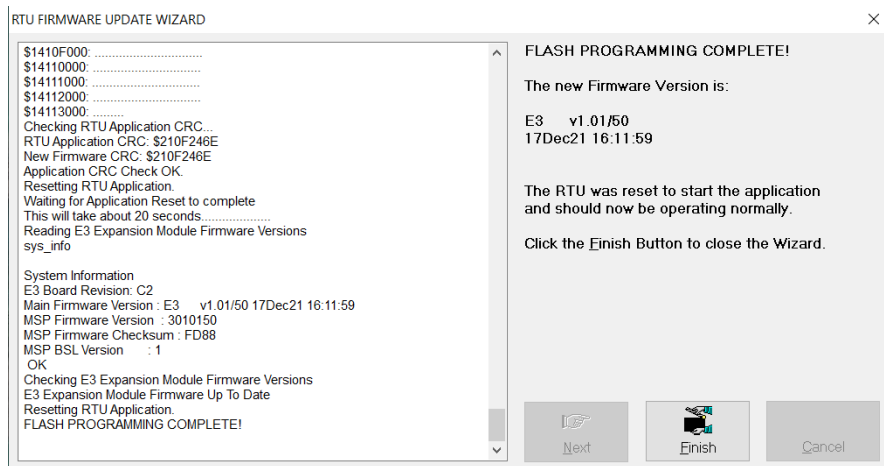
- 7) Click Communications
 - a. Select Update RTU Firmware



- 8) When the Wizard launches click Next
- 9) A Firmware File List will be displayed
 - a. Verify E3 v1-01-50.bin is highlighted in blue
 - b. Click Next

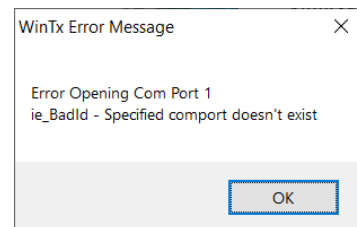


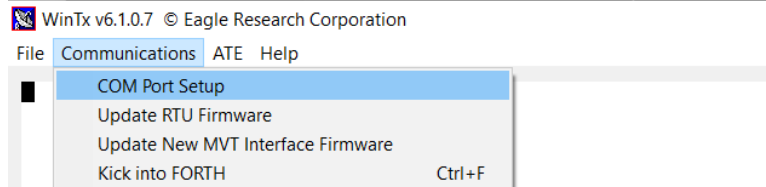
- 10) Once the update has completed the Finish button will be available.
 - a. Click Finish



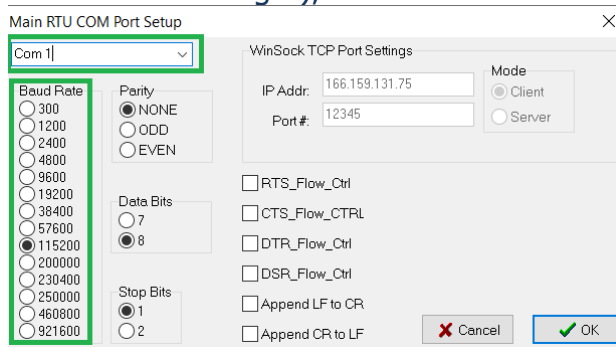
MPplus II

- 1) Connect Communications Cable
- 2) Launch Field Manager
- 3) Click on Tools
- 4) Click on Launch WinTx
 - a. If WinTx has never been used or if Port 1 is not the default click OK and the program will then launch
- 5) Click Communications
 - a. Select COM Port Setup

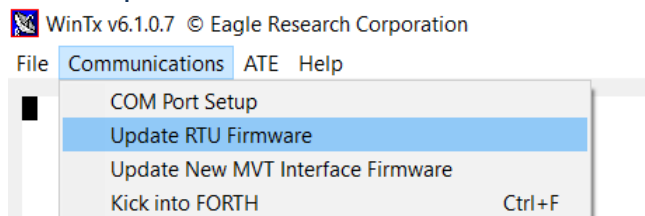




6) Set the Com Port and the Baud Rate to the proper selections (same used to connect with Field Manager), then click OK

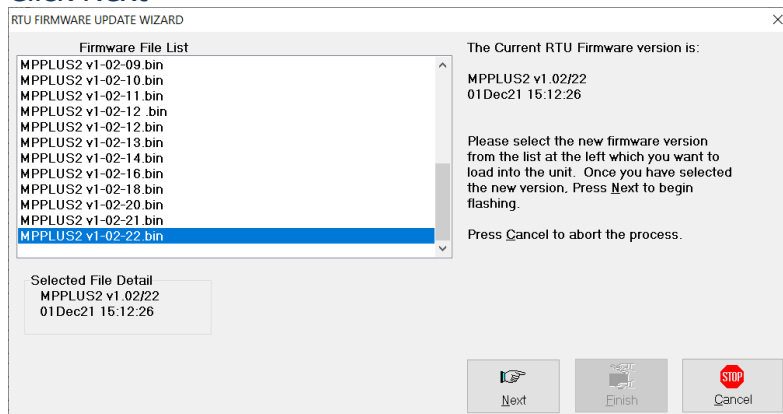


7) Click Communications
a. Select Update RTU Firmware



8) When the Wizard launches click Next

9) A Firmware File List will be displayed
a. Verify MPPLUS2 v1-02-22.bin is highlighted in blue
b. Click Next



- 10) Once the update has completed the Finish button will be available.
- a. Click Finish

