

ERC SPRING PRODUCT TRAINING (IN PERSON)

FALL PRODUCT TRAINING

1st Day Morning - MPplus II Series

- MPplus II Product Overview
- MPplus II Out of Box Setup
- Working with FM and MPplus II
- Getting Familiar with MPplus II Hardware

2nd Day Morning - Installation/Power/Comm

- Installation
- Grounding and Surge Protection
- Power Supply Options
- Communication Options
- Cellular Modem Setup
- Trouble Shooting

2nd Day Afternoon - E-Series

- E-Series Product Overview
- E-Series Out of Box Setup
- Working with FM and E-Series

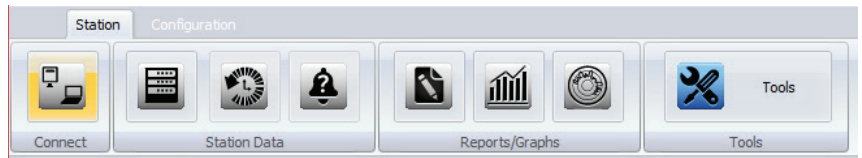
3rd Day Morning - E-Series

- E-Series Unit Calibration
- Getting Familiar with E-Series Hardware

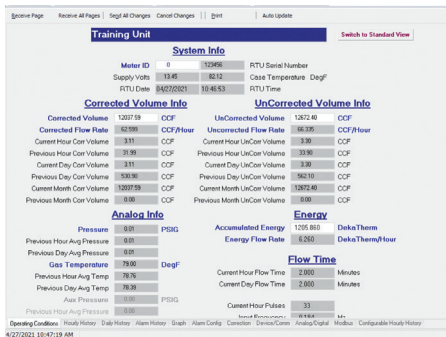
PRODUCT TRAINING: This two and half day, instructor-led course, provides the participants the knowledge and skills necessary to use Eagle's standard Volume Correctors, Flow Computers, RtpM Pressure Recorders and Field Manager Software. The training is organized in two parts (diagram on back). First MPplus II, and Power/Communication. Second Power/Communication, E-Series.

The objective for the program will be to provide everyone attending the Training with a solid working knowledge of the Eagle Research® Standard Products & Field Manager™ Software. Attendees will be exposed to a variety of Eagle personnel during the training process. You are encouraged to bring a laptop computer with you so that we may load Field Manager™ Software for you to work.

The Training Process is structured to build on prior modules as the time goes along, so attempting to pick and choose certain modules is not encouraged, as we are attempting to cover a lot of ground in a relatively short period of time.

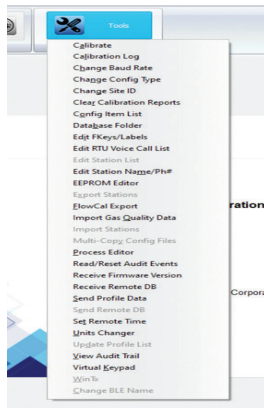


Menu Bar

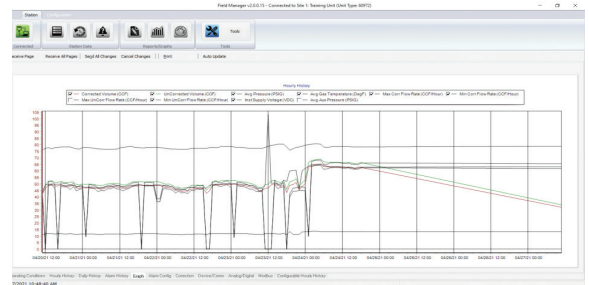


Station Data

Data Viewing and Software Configuration tabs.



Tool Bar



Live Graphing Feature

Field Manager™ allows live graphing on select process items.

ERC FALL PRODUCT TRAINING (IN PERSON)

FALL PRODUCT TRAINING

1st Day Morning - MPplus II Series

- MPplus II Product Overview
- MPplus II Out of Box Setup
- Working with FM and MPplus II
- Getting Familiar with MPplus II Hardware

2nd Day Morning - Installation/Power/Comm

- Installation
- Grounding and Surge Protection
- Power Supply Options
- Communication Options
- Cellular Modem Setup
- Trouble Shooting

2nd Day Afternoon - E-Series

- E-Series Product Overview
- E-Series Out of Box Setup
- Working with FM and E-Series

3rd Day Morning - E-Series

- E-Series Unit Calibration
- Getting Familiar with E-Series Hardware

PRODUCT TRAINING: This two and half day, instructor-led course, provides the participants the knowledge and skills necessary to use Eagle's standard Volume Correctors, Flow Computers, RtpM Pressure Recorders and Field Manager Software. The training is organized in two parts (diagram on back). First MPplus II, and Power/Communication. Second Power/Communication, E-Series.

The objective for the program will be to provide everyone attending the Training with a solid working knowledge of the Eagle Research® Standard Products & Field Manager™ Software. Attendees will be exposed to a variety of Eagle personnel during the training process. You are encouraged to bring a laptop computer with you so that we may load Field Manager™ Software for you to work.

The Training Process is structured to build on prior modules as the time goes along, so attempting to pick and choose certain modules is not encouraged, as we are attempting to cover a lot of ground in a relatively short period of time.

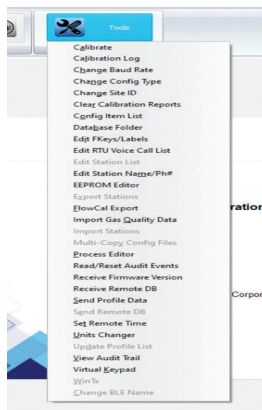


Menu Bar

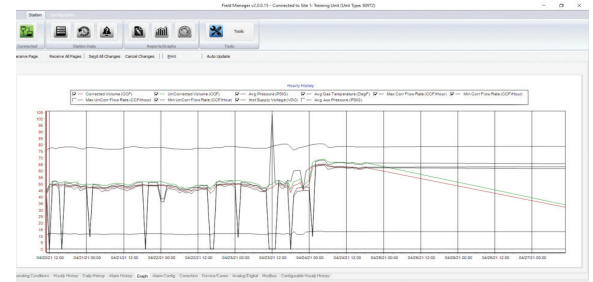


Station Data

Data Viewing and Software Configuration tabs.



Tool Bar



Live Graphing Feature

Field Manager™ allows live graphing on select process items.

EAGLE RESEARCH CORPORATION TRAININGS

Spring Product Training 2024 (In Person) is April 16-18, 2024
Fall Product Training 2024 (In Person) is October 1-3, 2024
Talon SCE Software Training 2024 (Virtual) is October 22-24, 2024

PRODUCT TRAINING DATES AND PRICES:

- **April 16-17 (1 ½ Day)** - MPplus II Training with Field Manager (FM v2) Software (\$150 per person)
- **April 17-18 (1 ½ Day)** - E-Series with Field Manager (FM v2) Software (\$150 per person)
- **October 1-2 (1 ½ Day)** - MPplus II Training with Field Manager (FM v2) Software (\$150 per person)
- **October 2-3 (1 ½ Day)** - E-Series with Field Manager (FM v2) Software (\$150 per person)

Full Training Pricing:

\$300/person. For three people from the same company, the total cost will be \$750 (a savings of \$150).

VIRTUAL TALON SCE TRAINING DATES AND PRICES:

- **October 22-24 (2 ½ Day)** (\$350 per person)

Full Training Pricing:

\$350/person. For three people from the same company, the total cost will be \$900 (a savings of \$150).

SPECIAL PRICING IF YOU REGISTER FOR ALL TRAININGS (FULL WEEK):

April 16-18 or October 1-3 with Virtual Talon special price is \$500/person.

PAYMENT: Payment must be made prior to attending the Training session. Checks should be made payable to Eagle Research Corporation®, and should reference “ERC – Training Session” with the names of those attending.

Credit card payments are accepted (Visa/Master Card).

TRAVEL INFORMATION

Airline reservations should be made into Charleston, WV and US Air, Continental, United, Northwest Air and Delta all serve the local market. The Charleston Airport is approximately 25 miles from our facility. Lodging is also available locally (approximately 5 min. from our facility)

The Holiday Inn Express conveniently located approximately one mile from our facility. Both the Hampton and the Holiday Inn are located off of Exit 39 on I-64 west of Charleston, WV.

If you prefer to stay in Charleston, there are a number of hotels available there as well, and we will be happy to make recommendations to you at your request.

REGISTRATION

To register, please visit www.eagleresearchcorp.com/Services/Training.aspx

For more information, please email training@eagleresearchcorp.com