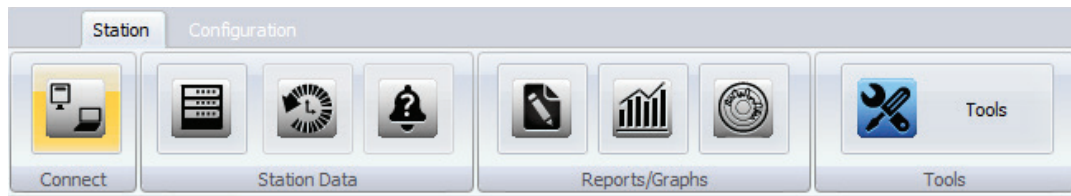


Field Manager™ is a Windows® based application specifically designed to support all Eagle Research Corporation® products within one common platform. Field Manager™ provides an easy-to-use feature set to assist users with 1) Setup and Configuration, 2) Data collection, 3) Viewing alarms/events, and 4) Device calibrations. It also includes a variety of other useful tools for troubleshooting and reporting. Communication to the field device is handled through USB, Ethernet, an RS232 communications cable, or using the optional Bluetooth interface. An extensive library of configuration databases simplifies the identification of standard device types in the field. The software matches the field device to a corresponding device type automatically and displays the appropriate graphical configuration forms for the user.

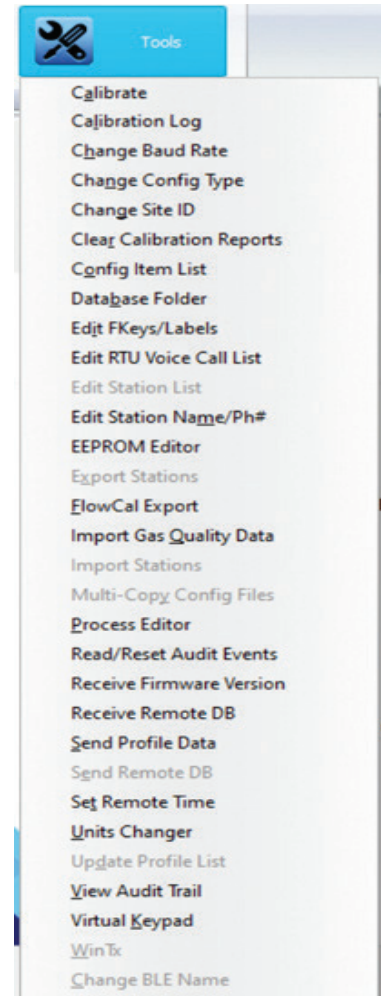


The **Tools Menu** contains functions primarily related to the system level. Upgrading firmware, generating station backups, calibration logs, and audit trail events can all be accessed through this menu. In addition, these software tools provide the user the ability to receive or reload the database, load profile data for transducers, and view any element in the RTU database using the Virtual Keypad or Process Editor.

**Alarms** that are still active or that have not been acknowledged can be reviewed using the Alarm button and all alarms are stored in time stamped records that log the Alarm Type, Setpoint, Extreme Value, and the current value.

The **Select Site** feature is used to keep connection details stored for easy connection to wireless sites and sites that do not have a standard baud rate configured. Within the Select Site feature there is a search function for easy identification of the desired station.

Data can be directly exported from the **History Grids** to a csv file or copied to the clipboard with just a couple clicks of the mouse. The data range feature can be used to scale the data to the exact period of time required for data export.



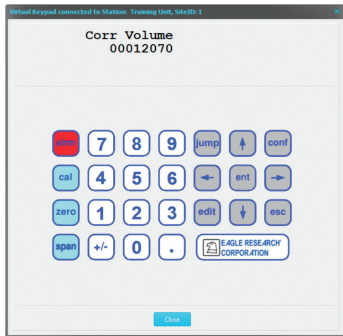
## HIGHLIGHTS - Features and Benefits:

- Auto unit identification
- Formatted and CSV Report generation
- Calibration wizards for ease of use
- Simple history data collection
- Easy tab navigation for data viewing and software configuration
- Data export for synchronization to the Talon™ Family of Products and sharing with other technicians
- Windows® Operating System: Server 2003, 2008, 2012, 2016, 2019; Windows® 7, 8.1, 10, 11
- Circular Charting
- Direct, dial-up, or TCP/IP based connection
- Live Graphing on select process items

# Virtual Keypad



The Virtual Keypad provides the same access to field device operating and debug modes as the hardware keypad versions. It simulates the keypad and display used by the field device. The Virtual Keypad can be used to execute functions which are normally performed from the field device keypad.

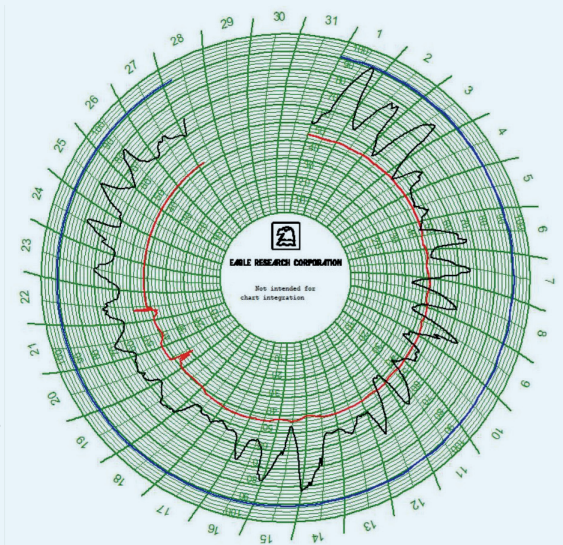


## Virtual Keypad Functions:

- Check and/or Clear alarms
- Access Configuration, Calibration, and Debug modes
- Access different Labels configured in the field device
- Work with system passwords
- View the Firmware Version and device serial number

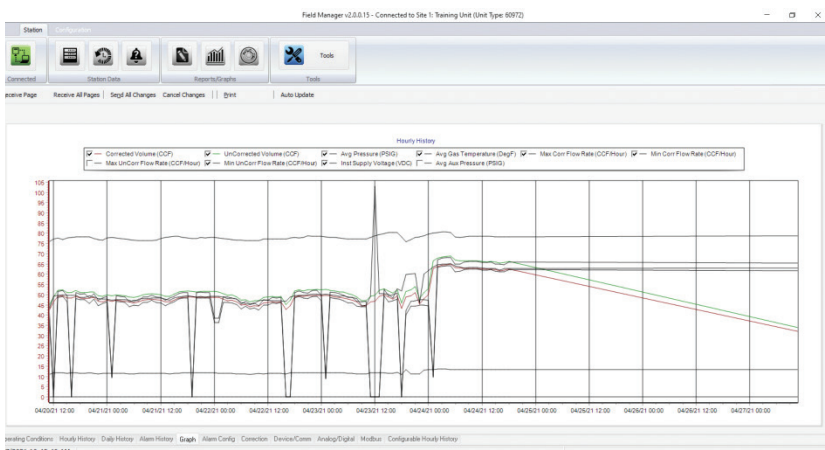
## Circular Charting Feature

- Provide circular chart data from any Eagle Research Corporation Flow Computer, Volume Corrector, or Pressure Recorder.
- Facilitate viewing operational data for well tenders as well as regulator station operators and engineers.
- Allows Multi-Pen-and-color selection for configurable displays with selectable pen order.
- Generate charts that can be printed on standard ink jet printers or wide carriage printers for actual chart size.



## Live Graphing Feature

Field Manager™ allows live graphing on select process items.



Training Unit		System Info	
Meter ID	0	125856	RTU Serial Number
Supply Yr/lt	13/45	82.12	Case Temperature DegF
RTU Date	04/27/2021	10:46:53	RTU Time
Corrected Volume Info		UnCorrected Volume Info	
Corrected Volume	12037.59 CCF	UnCorrected Volume	12672.40 CCF
Corrected Flow Rate	62.593 CCF/Hour	UnCorrected Flow Rate	66.335 CCF/Hour
Current Hour Corr Volume	3.11 CCF	Current Hour UnCorr Volume	3.30 CCF
Previous Hour Corr Volume	31.99 CCF	Previous Hour UnCorr Volume	33.90 CCF
Current Day Corr Volume	3.11 CCF	Current Day UnCorr Volume	3.30 CCF
Previous Day Corr Volume	530.90 CCF	Previous Day UnCorr Volume	562.10 CCF
Current Month Corr Volume	12037.59 CCF	Current Month UnCorr Volume	12672.40 CCF
Previous Month Corr Volume	0.00 CCF	Previous Month UnCorr Volume	0.00 CCF
Analog Info		Energy	
Pressure	0.01 PSIG	Accumulated Energy	1205.860 DekaTherm
Previous Hour Avg Pressure	0.01 PSIG	Energy Flow Rate	6.260 DekaTherm/Hour
Previous Day Avg Pressure	0.01 PSIG	Flow Time	
Gas Temperature	79.00 DegF	Current Hour Flow Time	2.000 Minutes
Previous Hour Avg Temp	79.76 DegF	Current Day Flow Time	2.000 Minutes
Previous Day Avg Temp	79.38 DegF	Current Hour Pulses	33
Aux Pressure	0.00 PSIG		
Previous Hour Avg Pressure	0.00 PSIG		

## Edit Menu

Data Viewing and Software Configuration tabs.